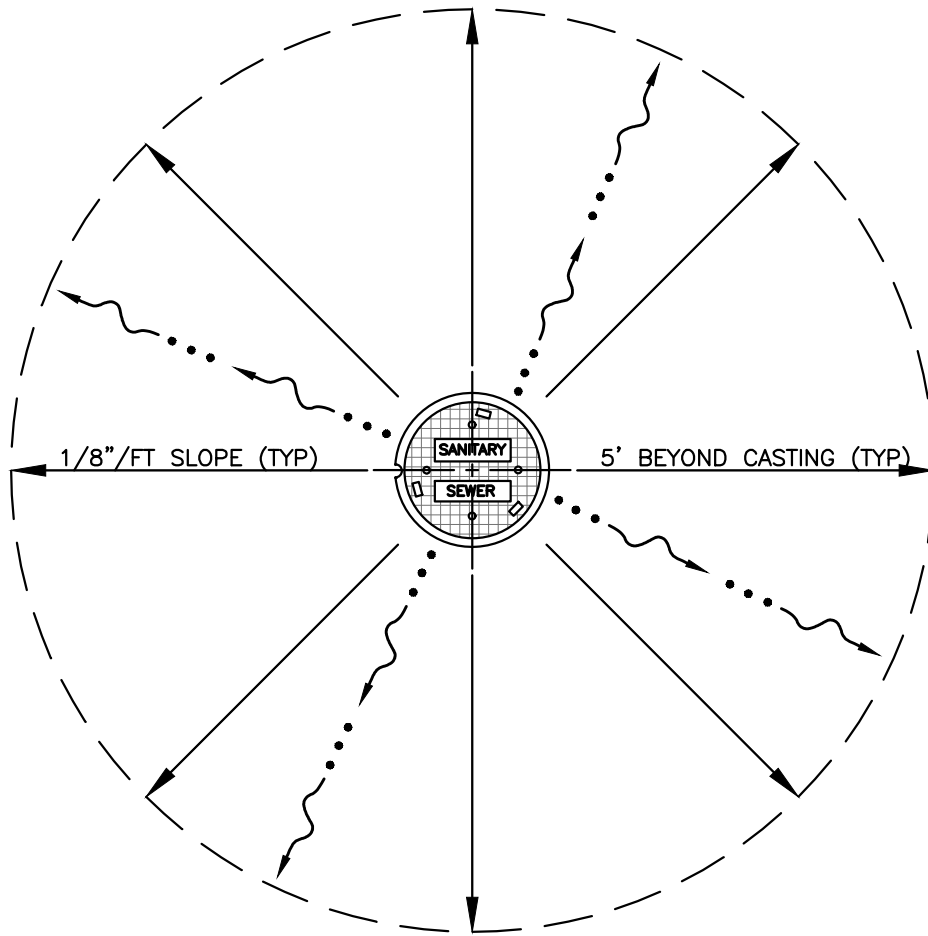
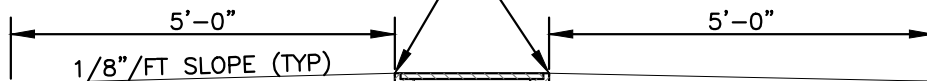


THIS DRAWING IS FOR ROAD GRADES LESS THAN 1" PER FOOT (i.e. LEVEL ±). SEE DRAWING 34 FOR ROAD GRADES GREATER THAN 1" PER FOOT.

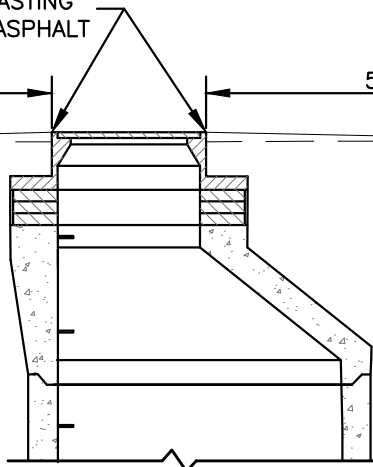


CONSTRUCT TOP OF CASTING
1/4" BELOW TOP OF ASPHALT



CONTRACTOR TO SLOPE PAVEMENT AWAY FROM THE MANHOLE CASTING IN ORDER TO AVOID ANY PONDING AROUND THE MANHOLE. THIS WORK IS TO BE DONE DURING PAVEMENT CONSTRUCTION AS THE FINAL TOPCOAT OF ASPHALT IS CONSTRUCTED AND PLACED.

GRADE ADJUSTMENT TO SLOPE TOP OF CASTING PARALLEL WITH ROAD SURFACE ON PAVEMENT GRADES GREATER THAN 1"/FT.



DATE: 10/19/2023

SS-D DWG. NO. 15

SCALE: NOT TO SCALE

City of Hendersonville Engineering Department
305 Williams Street
Hendersonville, NC 28792
(828) 697-3000 (office)

www.cityofhendersonville.org

MH CASTING IN NEW ASPHALT PAVEMENT
ROAD GRADES LESS THAN 1" PER FOOT

